

ECSC (Smart Card Reader) Installation Guide

STEP 1 – Install the Smart Card Reader software

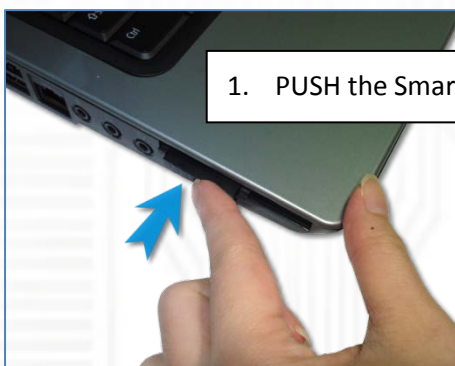
- Download the PC/SC drivers from the following link
▼ **Driver download** and follow the instructions
- Print the readme file for additional information



STEP 2 – Connect your Smart Card reader

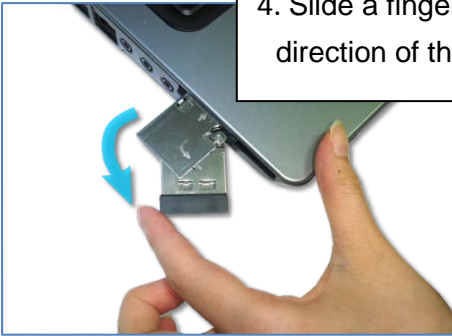
- Insert the Smart Card reader into Notebook's ExpressCard 34 slot
- Your reader is USB Plug & Play and ready for use

STEP 3 – How to insert the smart card from the reader



STEP 3 – How to insert the smart card from the reader

4. Slide a finger along the direction of the arrow



5. Rotate the panel for a right angle



6. Ready for a Smart card

According to image and follow the example of hand-fixed equipment



7. Smart card inserted in accordance with the direction of the arrow

STEP 5 – How to pull out the smart card from the reader

- Direction of the arrow pulled out in accordance with Smart Card



STEP 5 – How to return the smart card reader to original state

Please follow up the below instructions,



As a New manufacturer of quality computer connectivity products since 2009/Mar, BPLUS technology brings to market a broad range of upgrade products. These products bridge the connection between Desktop/Notebook systems and external peripherals.

Bplus
Bplus Technology

Adress:5F,NO.63,ZHOU-TZYY
ST.,NEI-HU,TAIPEI,TAIWAN,R.O.C
Tel:886-2-77210550 Fax:886-2-87974200
Email:sales@bplus.com.tw
<http://www.bplus.com.tw>